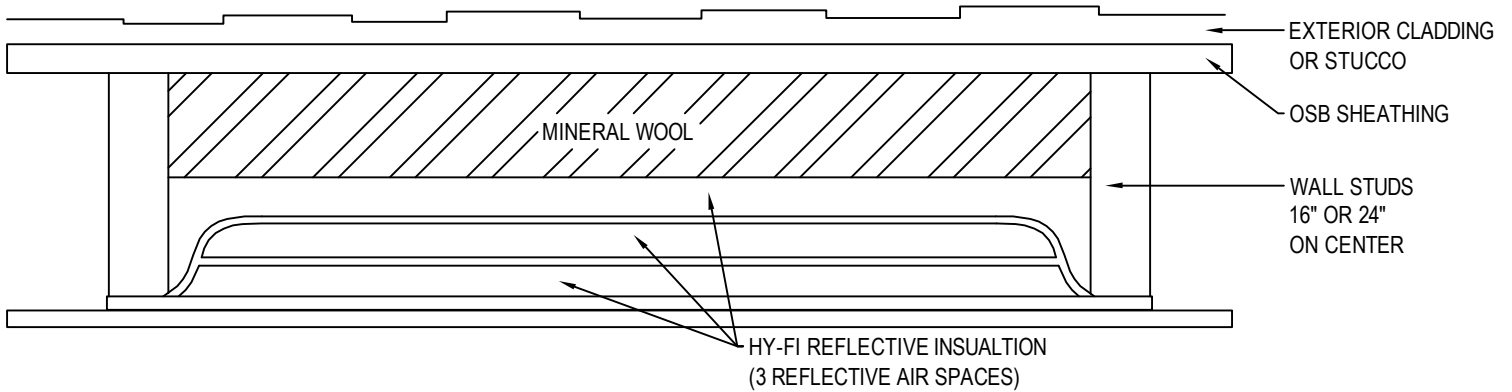




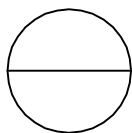
FI-FOIL COMPANY, INC.
 P.O. BOX 800
 AUBURNDALE, FL 33823
 TOLL FREE: 1-800-448-3401
 FAX: (863) 967-0137
 www.fifoil.com



2X6 FRAMING WITH VARIOUS THICKNESS OF FOAM 4" OF MINERAL WOOL AND HY-FI	
DESCRIPTION	SYSTEM R-VALUE FOR WALLS
2" X 6" WOOD FURRING / R-16 MINERAL WOOL / FI-FOIL HY-FI REFLECTIVE INSULATION	R-25

NOTES:

- FOR ADDITIONAL INFORMATION ON R-VALUE CALCULATIONS FOR WALL SYSTEMS, PLEASE REFER TO FI-FOIL TECHNICAL REPORT TITLED - "HY-FI WITH 4 INCHES OF MINERAL WOOL IN A 6 INCH WALL CAVITY".
- INSTALLATION TO BE COMPLETED IN ACCORDANCE WITH MANUFACTURER'S SPECIFICATIONS.
- DO NOT SCALE DRAWING.
- THIS DRAWING IS INTENDED FOR USE BY ARCHITECTS, ENGINEERS, CONTRACTORS, CONSULTANTS AND DESIGN PROFESSIONALS FOR PLANNING PURPOSES ONLY. THIS DRAWING MAY NOT BE USED FOR CONSTRUCTION.
- ALL INFORMATION CONTAINED HEREIN WAS CURRENT AT THE TIME OF DEVELOPMENT BUT MUST BE REVIEWED AND APPROVED BY THE PRODUCT MANUFACTURER TO BE CONSIDERED ACCURATE.
- CONTRACTOR'S NOTE: FOR PRODUCT AND COMPANY INFORMATION VISIT www.CADdetails.com/info AND ENTER REFERENCE NUMBER 647-003.



HY-FI HYBRID INSULATION SYSTEM

REFLECTIVE INSULATION AND MINERAL WOOL